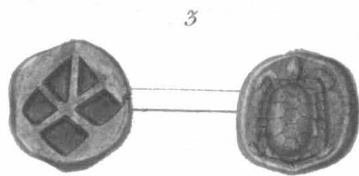
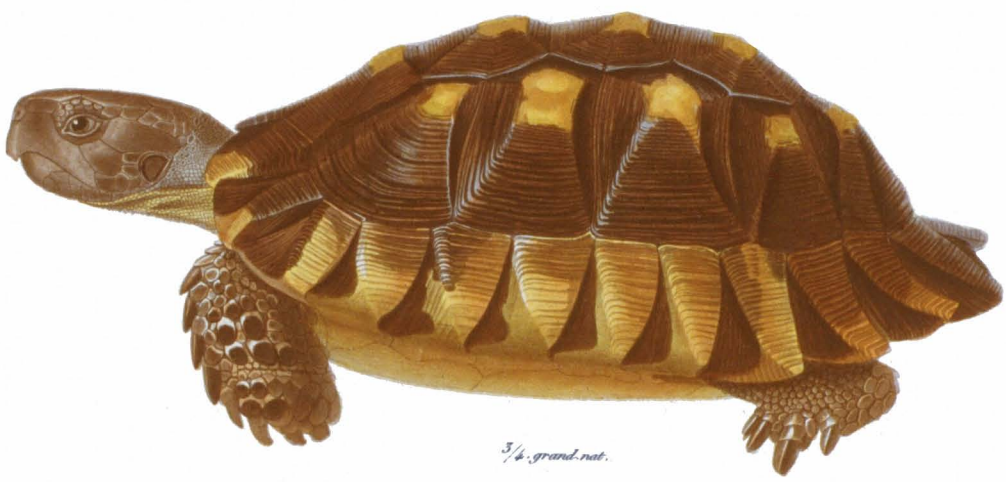
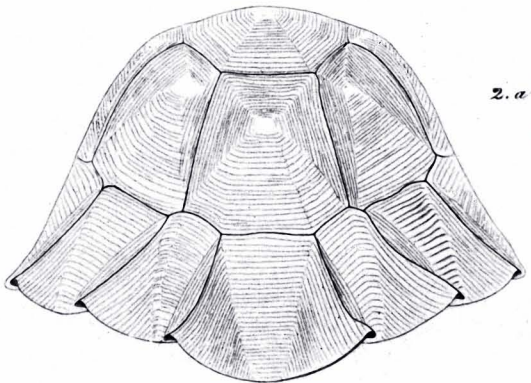
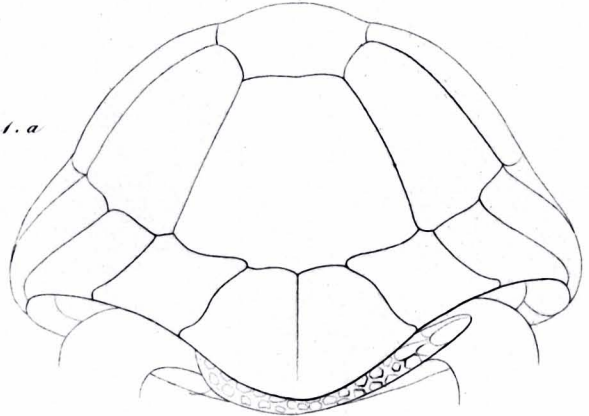
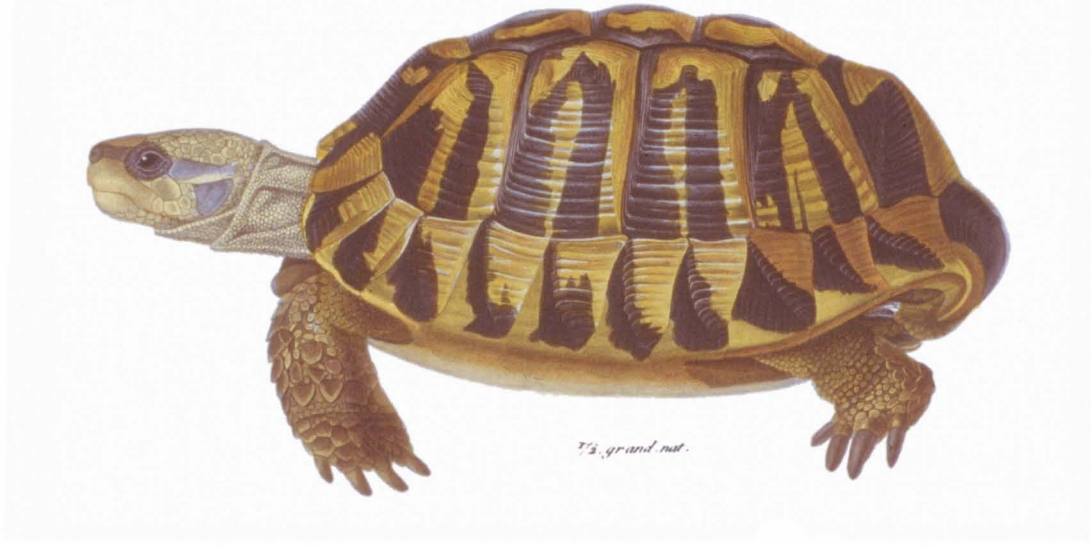


1. a



Chelonic des pelagos. Chelonia pelagorum. var.

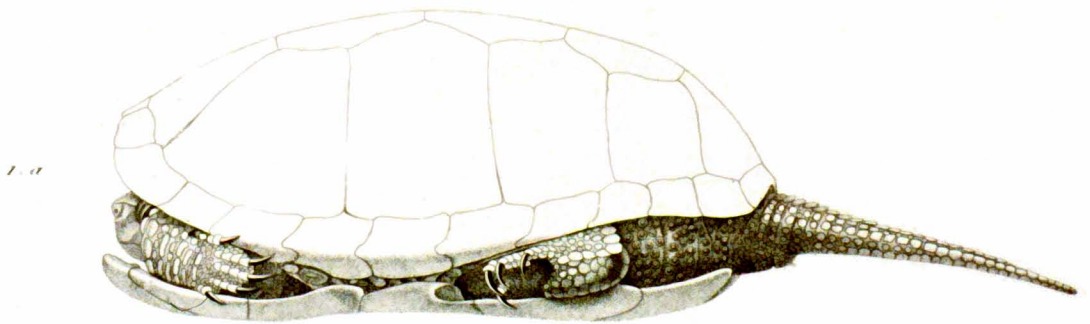
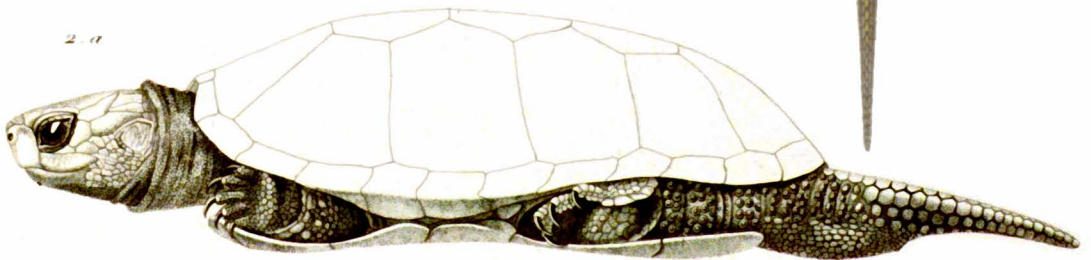
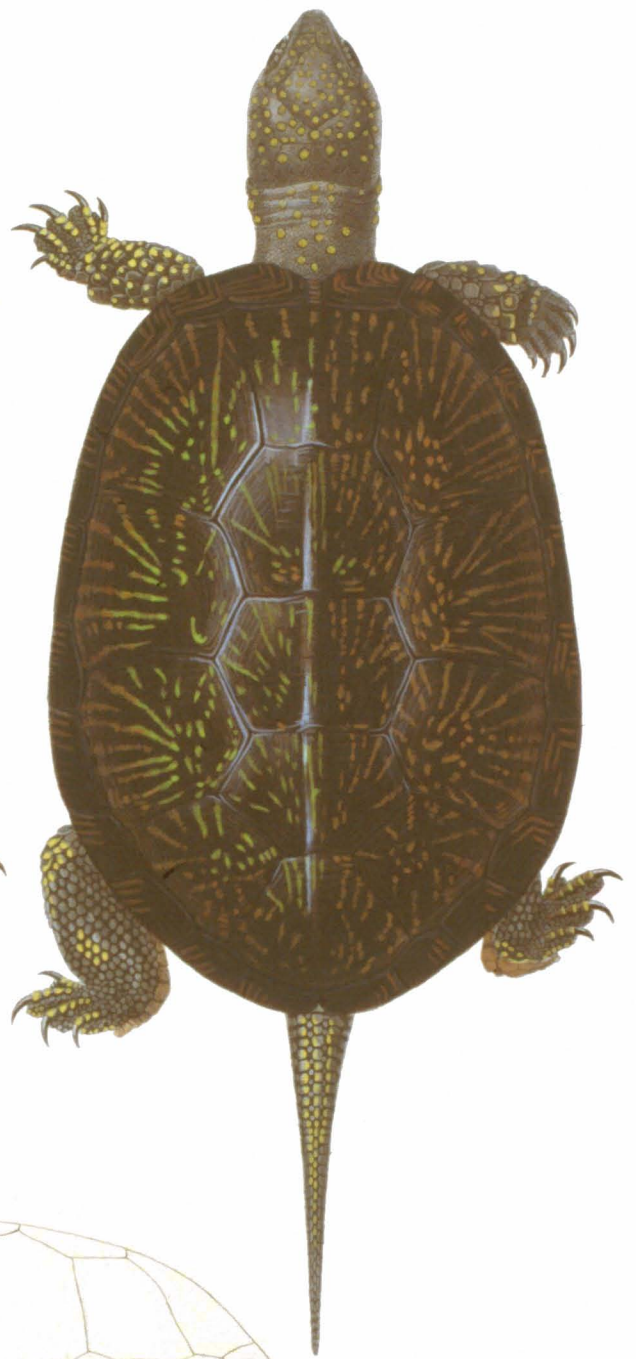
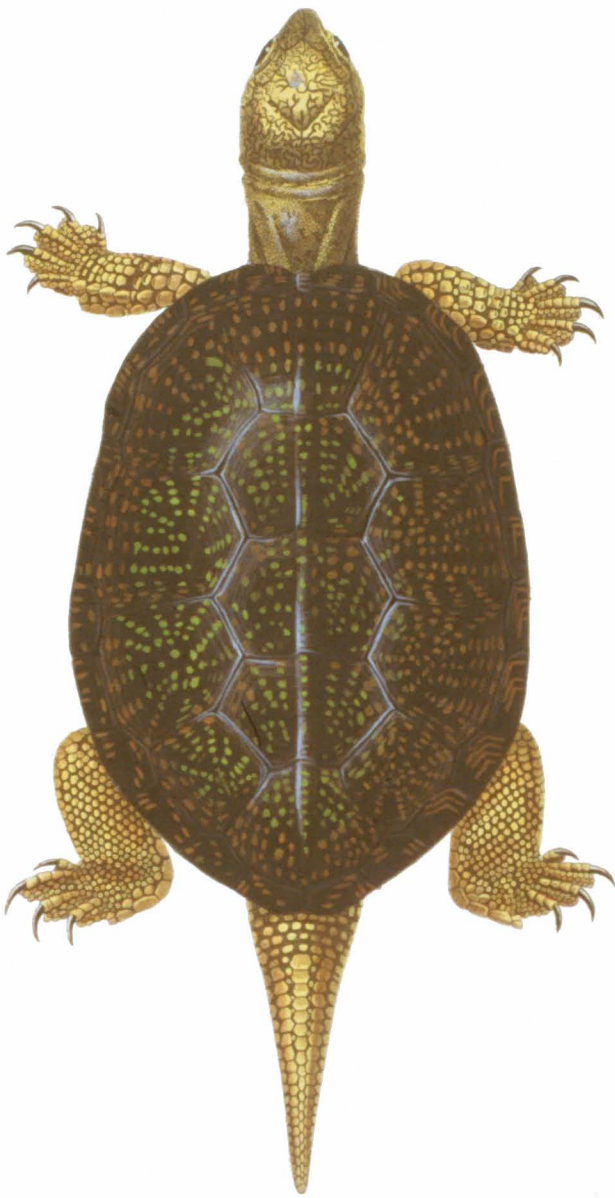
1. a. Profil de la tête. 2. Médulle d'Égypte ou se reconnaît la Chelonic des pelagos. 2 a. revers de la même méd.^{le}



1. *Testudo Graeca*. L. 2. *Testudo Marginata*. Schweig.

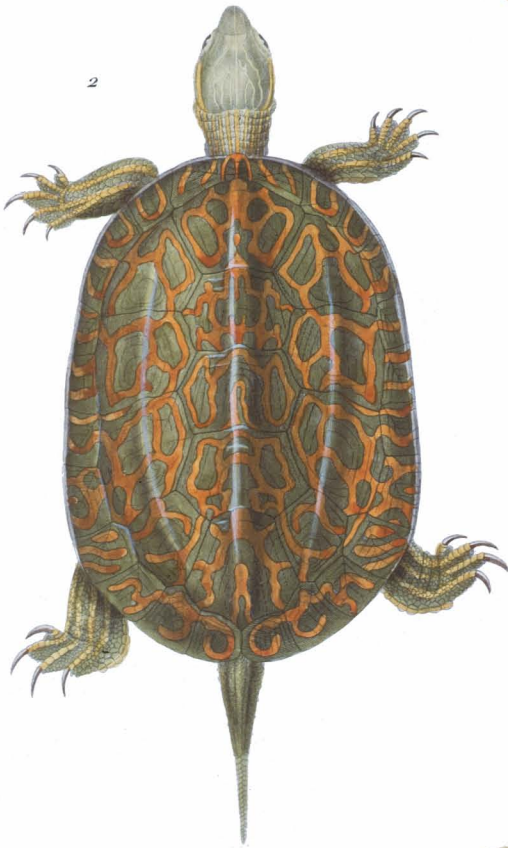
1. a et 2. a. L'une et l'autre vue par derrière pour montrer leur plaque uropygiale.

3. Médaille d'Égypte représentant une de ces Tortues.



1. et 1. a *Emyde européenne* *Emys europaea*. Schw.
2. et 2. a *Emyde hellénique* *Emys hellenica*. Val.





1. *Emyde ibérique. Emys ibérica. var.*
- 2 et 3. *Emyde à lignes sinueuses. Emys rivulata. var.*
4. *Tortue grecque. Testudo graeca. Lin. jeune individu à seconde plaque dorsale double.*

