

# ILLUSTRATIONS

OF

# INDIAN ZOOLOGY;

CHIEFLY SELECTED FROM THE COLLECTION

OF

**MAJOR-GENERAL HARDWICKE, F.R.S.,**

*L.S., M.R.A.S., M.R.I.A., &c., &c.*

---

BY

**JOHN EDWARD GRAY, F.R.S.,**

*F.G.S., F.Z.S., M.R.G.S.,*

CORRESPONDING MEMBER OF THE ACADEMY OF NATURAL SCIENCES, AND MACLURIAN LYCEUM OF PHILADELPHIA, HONORARY

MEMBER OF THE NATURAL HISTORY SOCIETY OF PARIS, AND OF THE IMPERIAL SOCIETY OF THE OBSERVERS OF

NATURE AT MOSCOW, AND OF THE NATURAL HISTORY SOCIETY OF NEWCASTLE-UPON-TYNE, &c. &c.

---

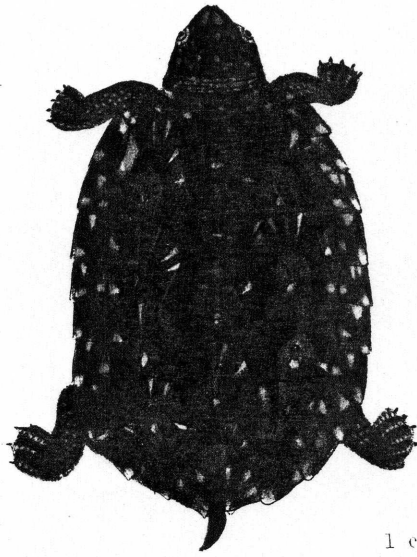
**VOL. I.**

---

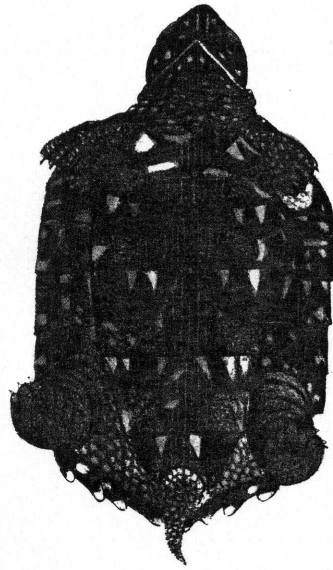
**LONDON:**

PUBLISHED BY TREUTTEL, WURTZ, TREUTTEL, JUN. AND RICHTER, SOHO SQUARE; 17, RUE BOURBON, PARIS; AND GRANDE RUE, STRASBURG; ALSO BY PARBURY, ALLEN AND CO., 7, LEADENHALL STREET.

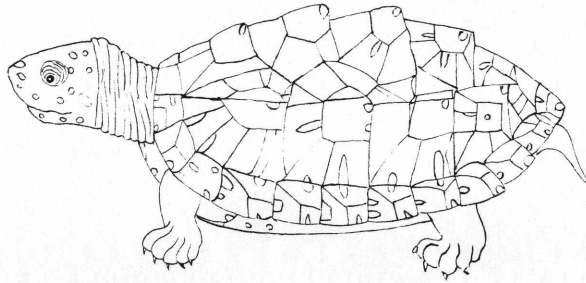
1 b



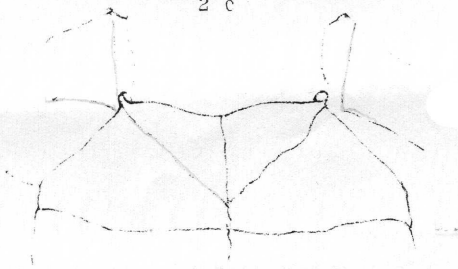
1 a



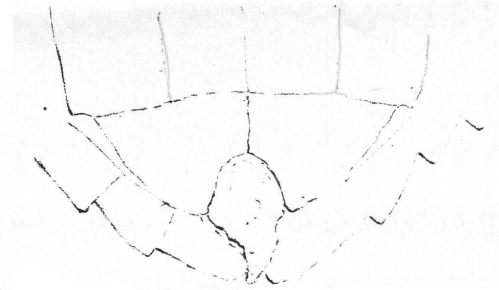
1 c



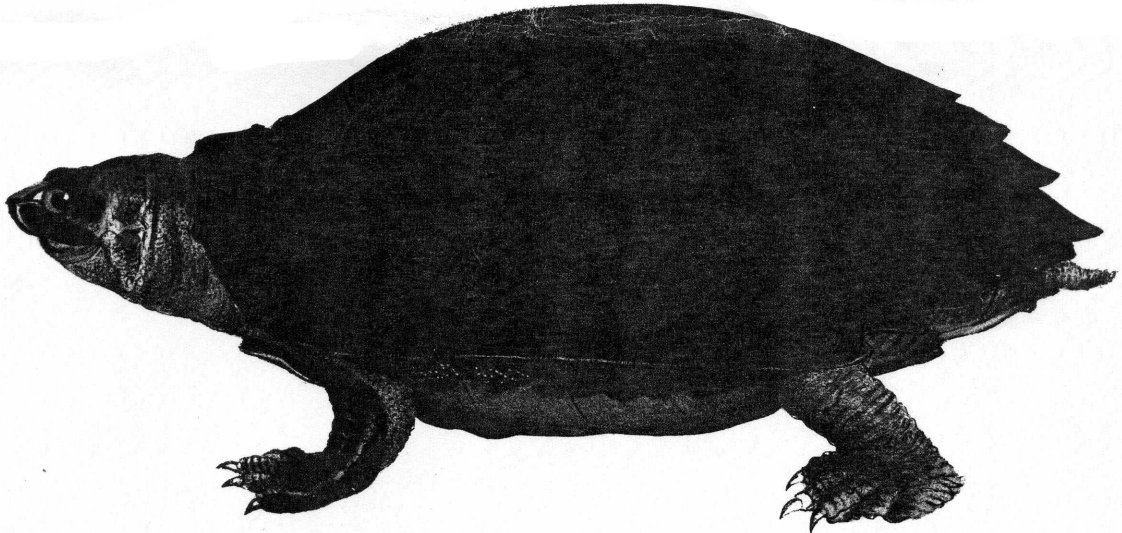
2 c



2 b



2 a



1.....SPOTTED TERRAPIN-EMYS GUTTATA n.

From Dr Buchanan Hamiltons Drawings.

2.....THICKNECKED TERRAPIN-EMYS CRASSICOLLIS. Bell Mjs

Mus D Bell.